

PROGETTO ESECUTIVO
COMPLETAMENTO PALESTRA ISTITUTO TECNICO
PER GEOMETRI DI ROSSANO (CS)

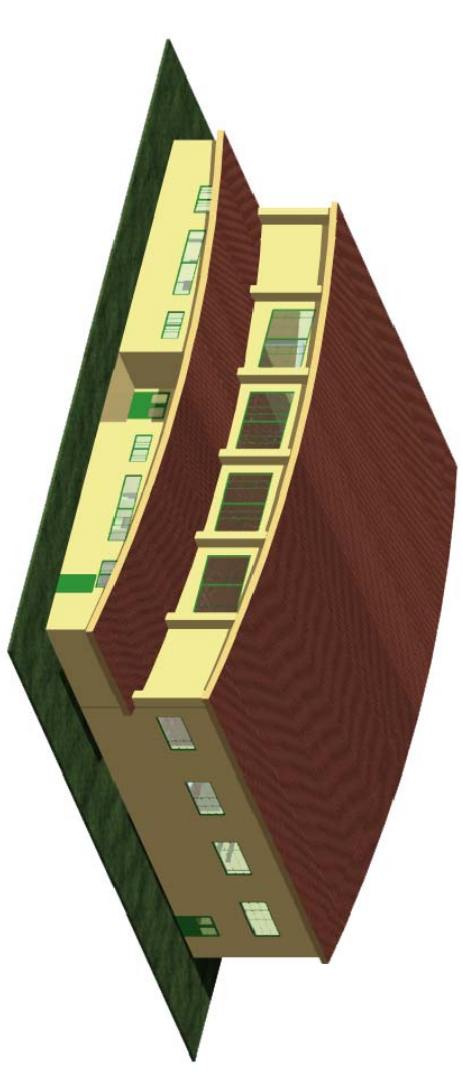





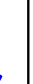





TAVOLA n° IE03	SCALA 1:100	Data: GIUGNO '19
DISTRIBUZIONE IMPIANTO ILLUMINAZIONE NORMALE ED EMERGENZA (SERVIZIO)		
PROGETTISTA		
ARCHITETTO/ING.	IMPIANTI	
Arch. Angelo Marcellio Gascone		
COORDINATORE PER LA SICUREZZA	DIRETTORE DEI LAVORI	
	Arch. Angelo Marcellio Gascone	
IMPRESA	RESPONSABILE DEL PROCEDIMENTO	
	Ing. Giuseppe Piccaro	

LEGENDA	
	Quadro Elettrico Generale
	Plafoniera stagna IP55 2x36 W
	Plafoniera stagna IP55 2x36 W con inverter di emergenza SE
	Plafoniera stagna IP55 2x18 W
	Interruttore unipolare IP40
	Interruttore unipolare stagno IP55
	Plafoniera di emergenza del tipo SE - potenza 24 W IP55 - da incasso o appliche, provvista di eventuali pirogrammi
	Plafoniera di emergenza del tipo SA - potenza 18 W IP55 - da incasso o appliche, provvista di eventuali pirogrammi
	

The floor plan shows a large sports hall with a basketball court in the center. The court is 29.00m wide and 33.00m long. To the left of the court are the service areas, which are 14.30m wide. These areas include a 'Spogliatoio maschi' (men's locker room) with a 'docce' (showers) and 'WC H' (restrooms), a 'Spogliatoio femmine' (women's locker room) with a 'docce' and 'WC H', a 'Medico' (medical room), a 'WC' (restroom), a 'Spogliatoio Professori' (professors' locker room) with a 'docce' and 'WC H', a 'Cantina' (canteen), and a 'Deposito Attrezzi' (equipment storage). There are also 'EXIT' signs and a 'Cassa' (cash desk) near the entrance. The total width of the building is 29.00m + 14.30m = 43.30m. The total length is 33.00m + 14.30m = 47.30m.