



Provincia di Cosenza

provincia di Cosenza

Progetto Esecutivo di
Adeguamento dell'I.S.A.
di Luzzi (CS)

Lat. 39.4550 Long. 16.2466

Tav.3.0

1:50

Rilievo Carpenterie
Esistenti

Il Progettista
Ing. Eugenio Orsento

Il R.U.P.
Ing. Gailla A. Morrone

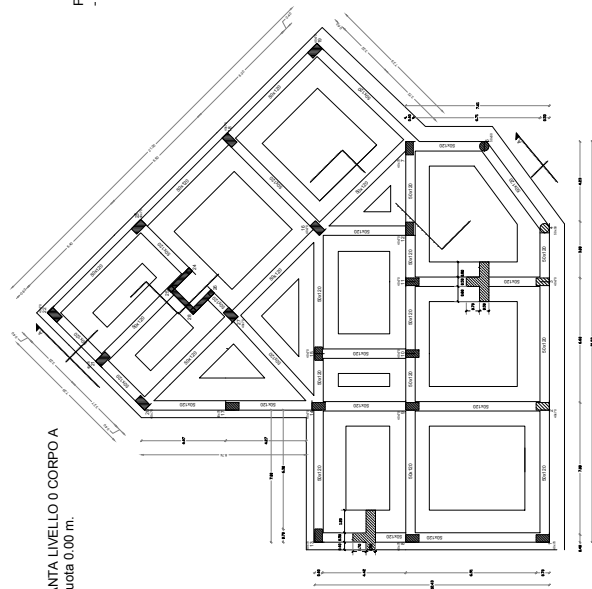
Il D. L.

Ing. Gianluca Salvatore Stralace

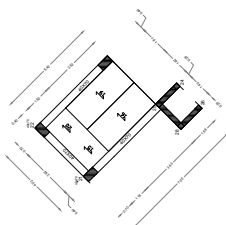
L'Impresa



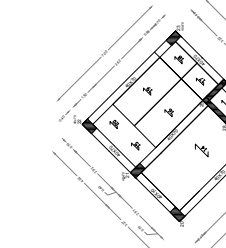
Ing. Roberto Orsento
Via S. Maria, 10 - 87030 Luzzi (CS)
Tel. 0984/241111 - Fax 0984/241112
E-mail: roberto.orsento@provincia.cosenza.it



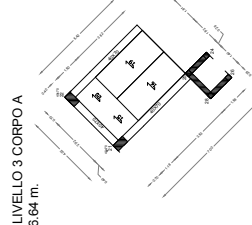
PIANTA LIVELLO 0 CORPO A
- Quota 0.00 m.



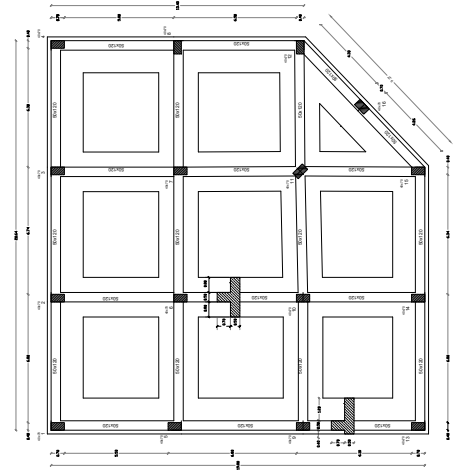
PIANTA LIVELLO 1 CORPO A
- Quota 3.16 m.



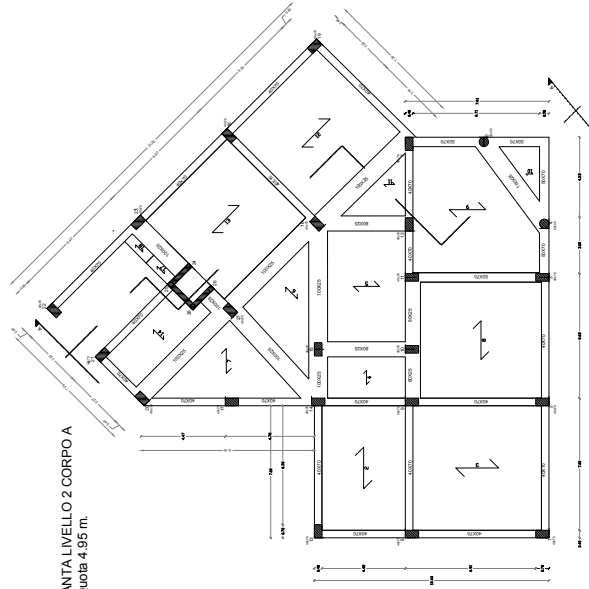
PIANTA LIVELLO 5 CORPO A
- Quota 11.45 m.



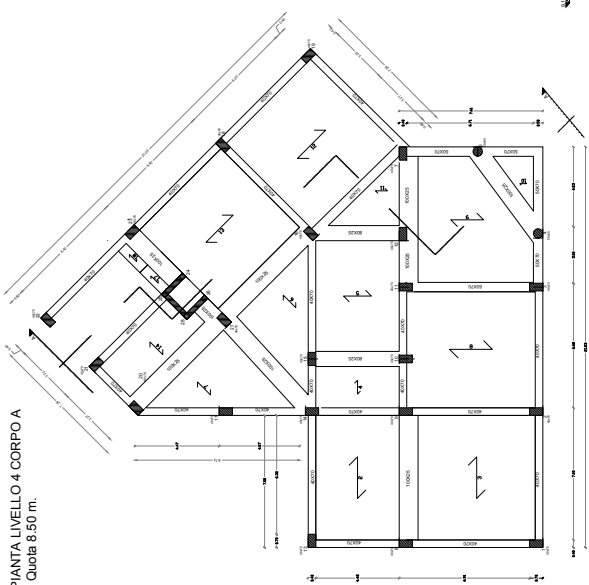
PIANTA LIVELLO 3 CORPO A
- Quota 6.64 m.



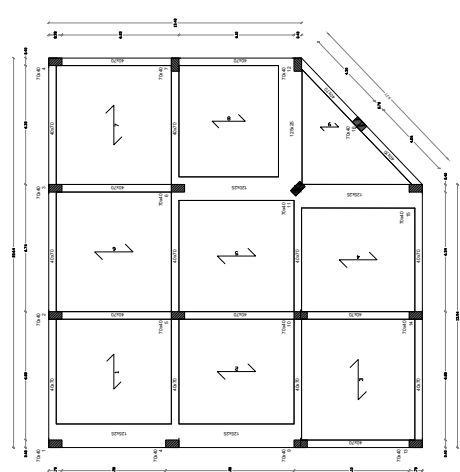
PIANTA LIVELLO 0 CORPO B
- Quota 0.00 m.



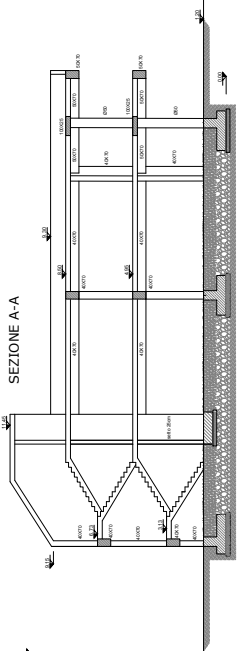
PIANTA LIVELLO 2 CORPO A
- Quota 4.95 m.



PIANTA LIVELLO 4 CORPO A
- Quota 8.50 m.



PIANTA LIVELLO 1 CORPO B
- Quota 3.75 m.



SEZIONE A-A